

Wolverhampton Archaeology Group

Project No 59

Derelict Cottage near Moseley Court

Site Director Eileen Matthews

By

M R Holland

09/01/2017

Contents

Figures.....	3
Introduction.....	4
Location	5
Results.....	8
Cottage	8
Trench A.....	11
Discussion.....	14
Conclusion	15
Acknowledgements.....	16
Copyright Notice.....	16
References.....	16
Appendix A.....	17

Figures

Figure 1 1816 Map showing the location of the cottage (annotated).	5
Figure 2 LiDAR image showing the cottage and trench A.....	6
Figure 3 OS Map of the area.....	7
Figure 4 Walk from the cottage to Northcote farm.....	7
Figure 5 Photographs of the dig at the cottage	9
Figure 6 Trench A facing NNE.....	11
Figure 7 Trench A facing SSW.....	12
Figure 8 Site Plan for Trench A, relative to the cottage baseline.	13

Introduction

There is a derelict cottage close to Moseley Court, a few metres south of a mill on the lake and adjacent to an old road leading from Moseley Old Hall to Northycote farm. WAG was asked by Eleanor Ramsey, Wolverhampton Archaeology and Historic Environment Officer to investigate this site and to record the remains of the cottage, hopefully the floor plan. Nothing is known about this cottage, but its location could suggest it was used by staff at Moseley Court or the mill. Being adjacent to a road would have been an advantage.

Location



Figure 1 1816 Map showing the location of the cottage (annotated).

As can be seen from Figure 1, both the cottage and the mill are close to a road (which no longer exists).

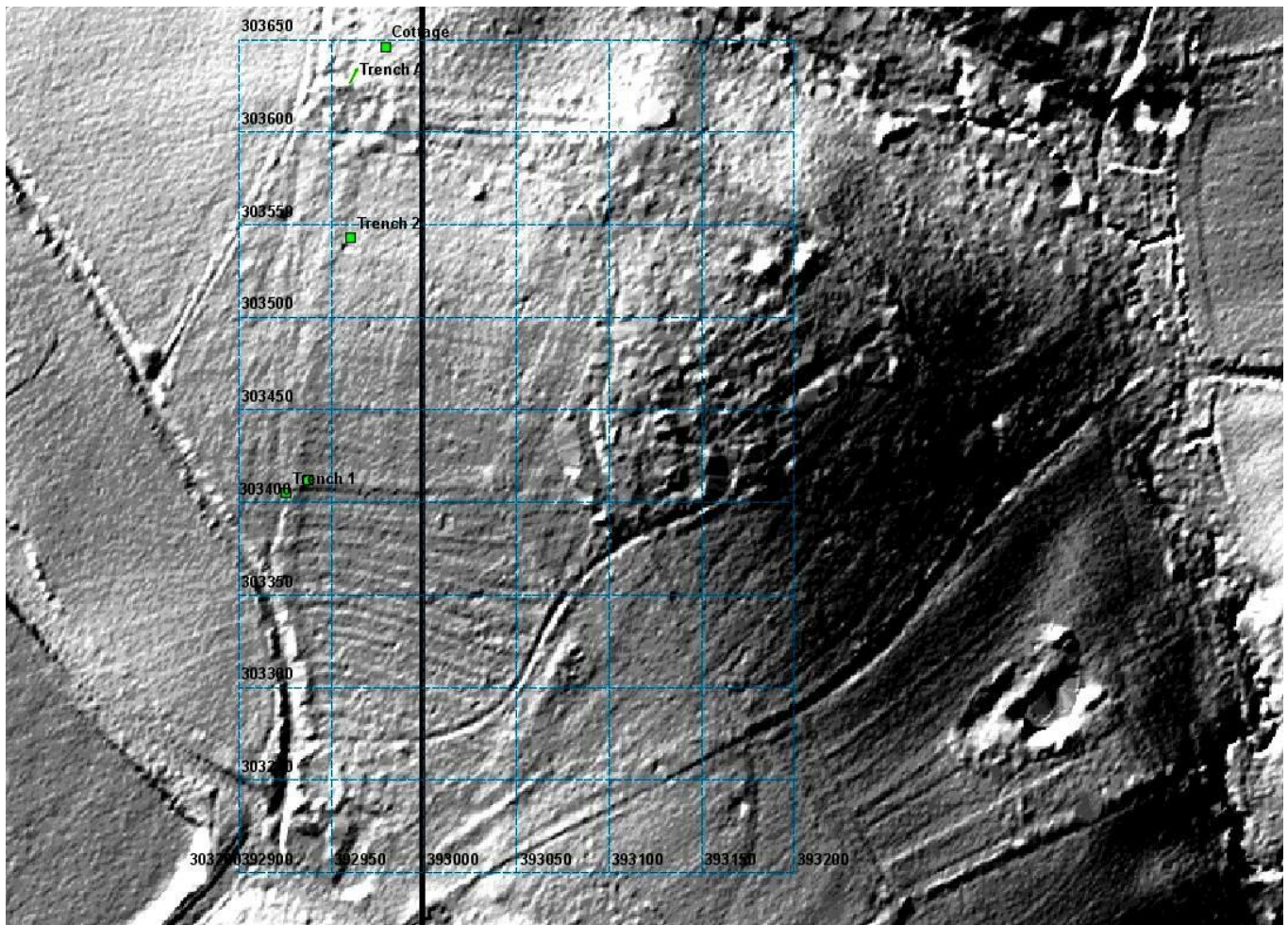


Figure 2 LiDAR image showing the cottage and trench A.

The road which was adjacent to the cottage no longer exists, but its remains can be seen running approximately north to south in the LiDAR image. In addition, a LiDAR trackway can be seen going to the east towards Moseley Court and south of the cottage. Today, the main path past the cottage is to the north of it.

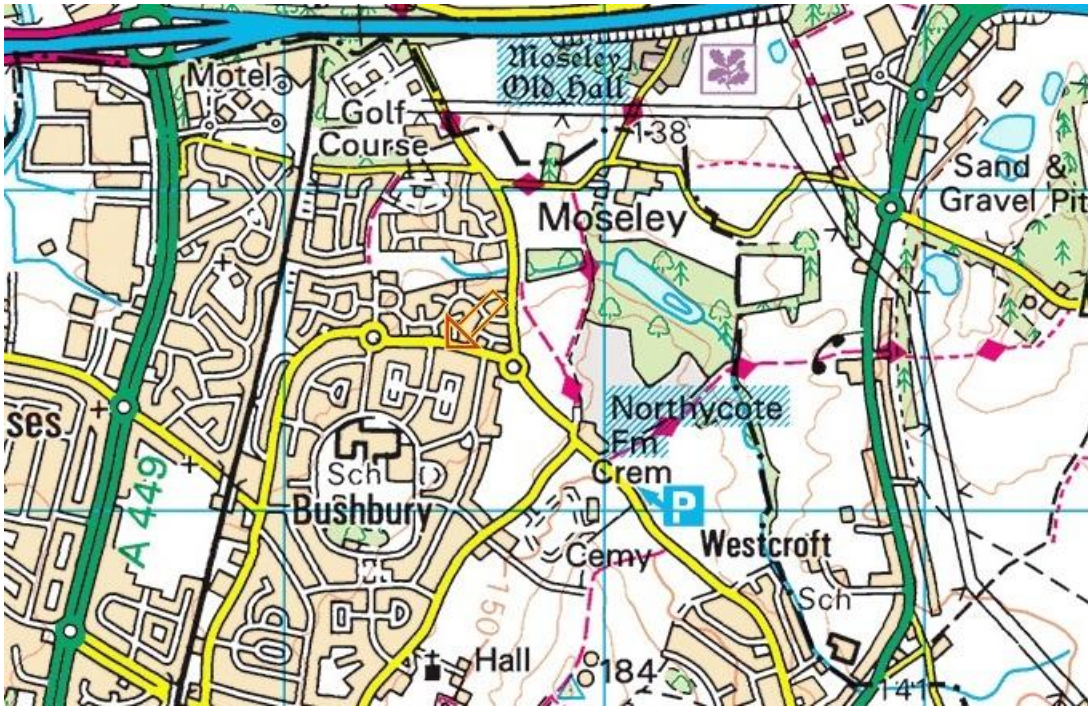


Figure 3 OS Map of the area.

Figure 3 shows the relationship between Moseley Old Hall, Northcote farm and the lake.

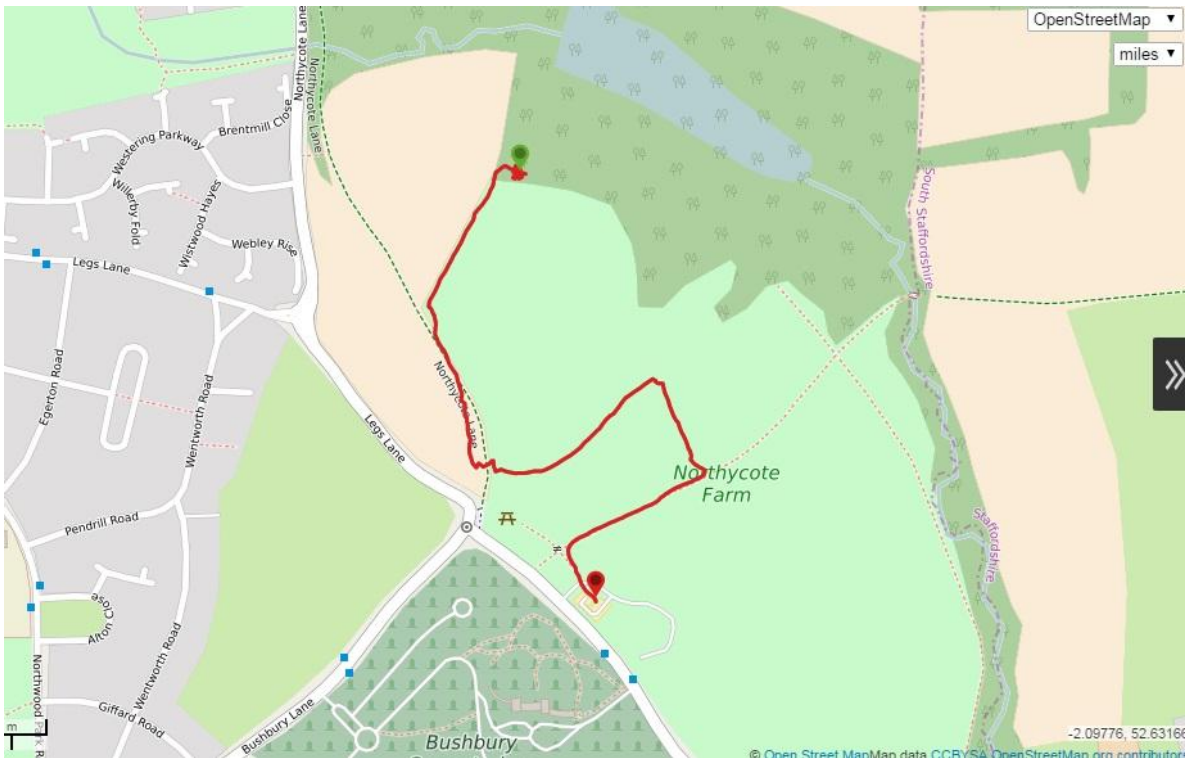


Figure 4 Walk from the cottage to Northcote farm.

Figure 4 shows the route from the cottage to Northcote farm obtained by ViewRanger.

Results

Cottage

GPS Reference 303646 N 392980 E

There was nothing visible of the cottage above ground apart from some broken bricks close to a tree. Careful excavation soon exposed the walls of the cottage. A site baseline was created running north south for 10m with the start close to where the NE corner of the cottage was eventually found to be. The GPS coordinates for the origin were measured and are recorded above.

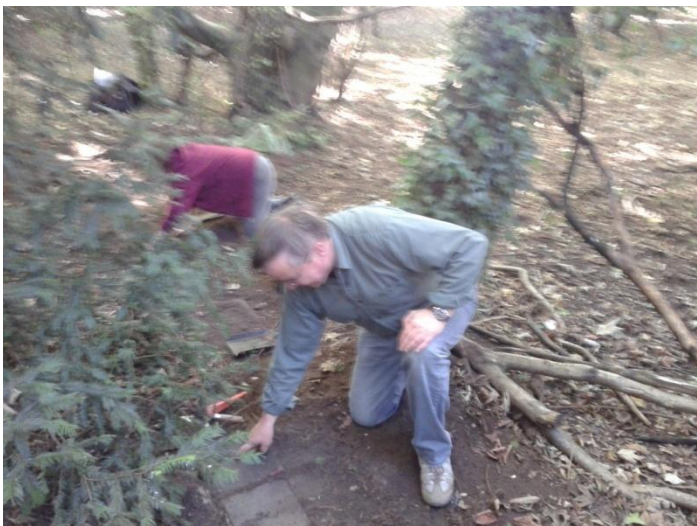




Figure 5 Photographs of the dig at the cottage

The complete floor plan of the cottage was uncovered. There was a bow window to the south. In the absence of a TBM, the floor height at the NE corner of the cottage was designated 0.0m and all other measurements were made relative to this.

Location	Height
Brett's Trench	0.347m
Floor near bow window	0.26m
Yellow tiles	0.18m
NE corner	0m
Wall S end	0.47m
SW corner	0.17m
Bow window floor	0.41m

Trench A

The LiDAR map showed a track running north/south just to the west of the cottage so Trench A was dug to try to locate it. This trench was 15m long by 0.5m wide and was oriented NNE i.e. 22.5 degrees east. The origin for the NE corner was 12.5m south and 16.5m west of the cottage baseline (392963.5E and 303633.5N).



Figure 6 Trench A facing NNE



Figure 7 Trench A facing SSW

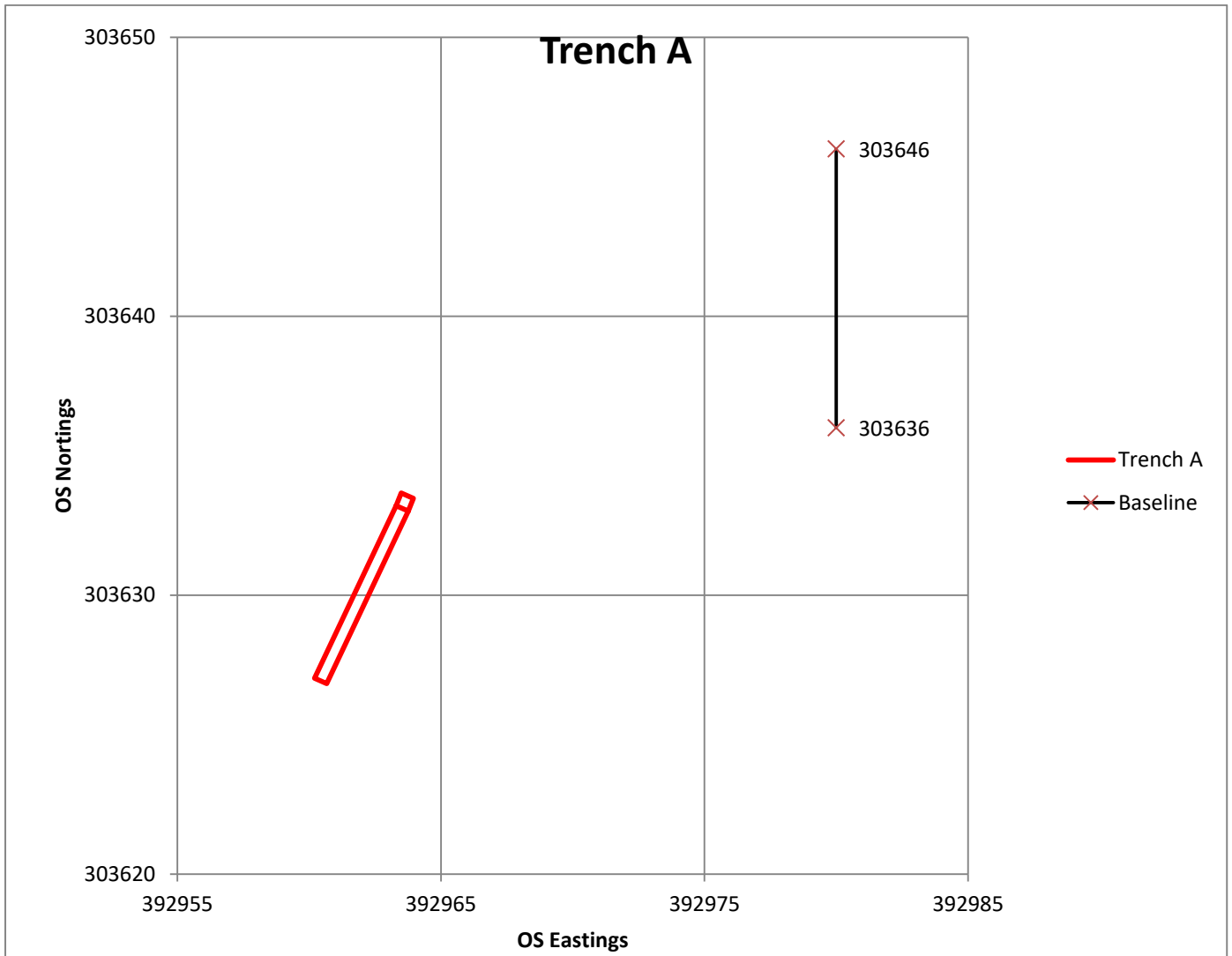


Figure 8 Site Plan for Trench A, relative to the cottage baseline.

Discussion

Where is the cottage on the ground?

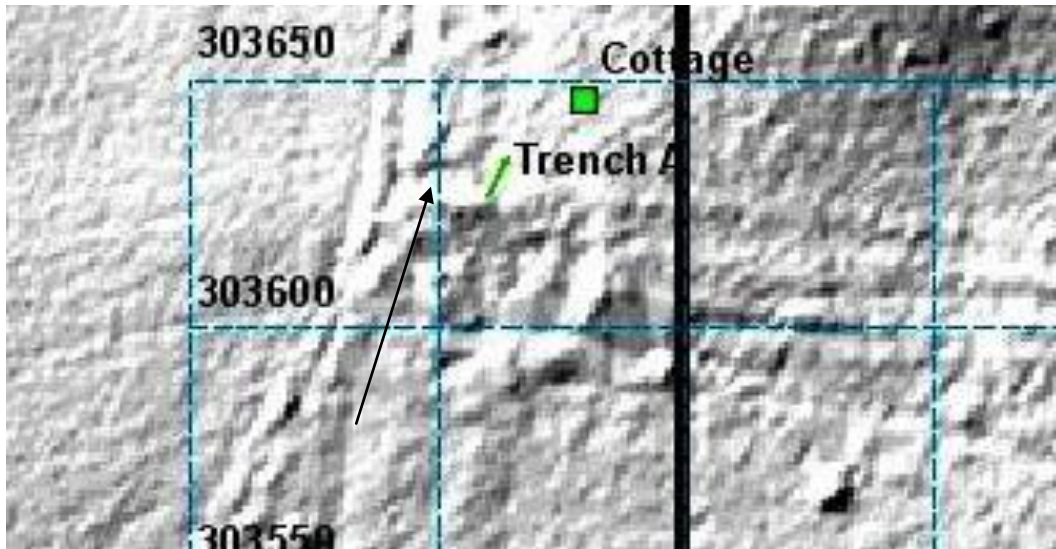


Figure 9 Detail of LiDAR map around the cottage.

Originally, the cottage was said to be in some disturbed ground close to the old road as shown by the arrow. However GPS puts its location as shown on the map at 303646N and 392980E. The position of the suggested location as measured in QGIS is 303632N and 392947E. i.e. 14m further south and 33m further east of the GPS measured location. This deviation is far too large to be attributed to the known errors in GPS measurement.

The south wall of the cottage had a bay window in it so this would have been the front of the building and would be expected to face the access road which is confirmed by the position of the east/west trackway on the LiDAR. Today, however, the path to the cottage splits, one runs to the north of the cottage and the other runs to the south.

The position of trench A was measured relative to the site baseline so this change would place it well to the west of the old road.

Conclusion

WAG uncovered the floor plan for the cottage. A tutorial on recording and drawing the floor plan was promised but never materialised so regrettably the excavation stopped at this point and, therefore, no site plan was produced.

Acknowledgements

Clive Westwood

Sue Foster

Mike

Jan Holland

Martin Holland

Steve Newton

Keith

Copyright Notice

The contents of WAG Projects are copyright and may not be copied or stored in an information retrieval system without the prior permission of the WAG Chairman.

References

Appendix A