

Wolverhampton Archaeology Group

Project No 62

Missing Road at Northcote

Site Director Eileen Matthews

By

M R Holland

09/01/2017

Contents

Figures.....	3
Introduction.....	4
Investigation.....	6
Cottage	7
Trench A	7
Trench 1	9
Trench 2	10
Site Diary 24/11/16	10
Site Diary 12/12/2016	12
Results.....	16
Discussion.....	17
Conclusion	18
Acknowledgements.....	19
Copyright Notice.....	19
References.....	19
Appendix A.....	20

Figures

Figure 1 1816 OS Map.....	4
Figure 2 Modern Street map	5
Figure 3 LiDAR Map and site plan.....	6
Figure 4 Trench A facing NNE.....	7
Figure 5 Trench A facing SSW.....	8
Figure 6 Pseudosection along Trench 2	9
Figure 7. South end of Trench 2 showing the tree bole with burrow? entrance.	10
Figure 8 Stone in situ on west side of trench.	11
Figure 9 Animal run at south west corner.....	12
Figure 10. View of Trench 2.....	13
Figure 11. Section at north end.	14
Figure 12. Sondage at north end of trench.....	15

Introduction

An 1816 OS map shows a road which runs from Moseley Old Hall to Northcote farm.



Figure 1 1816 OS Map

This road no longer appears in more modern maps



Figure 2 Modern Street map

WAG was asked to investigate their apparent disappearance and to see if any evidence remains for the original road.

Investigation

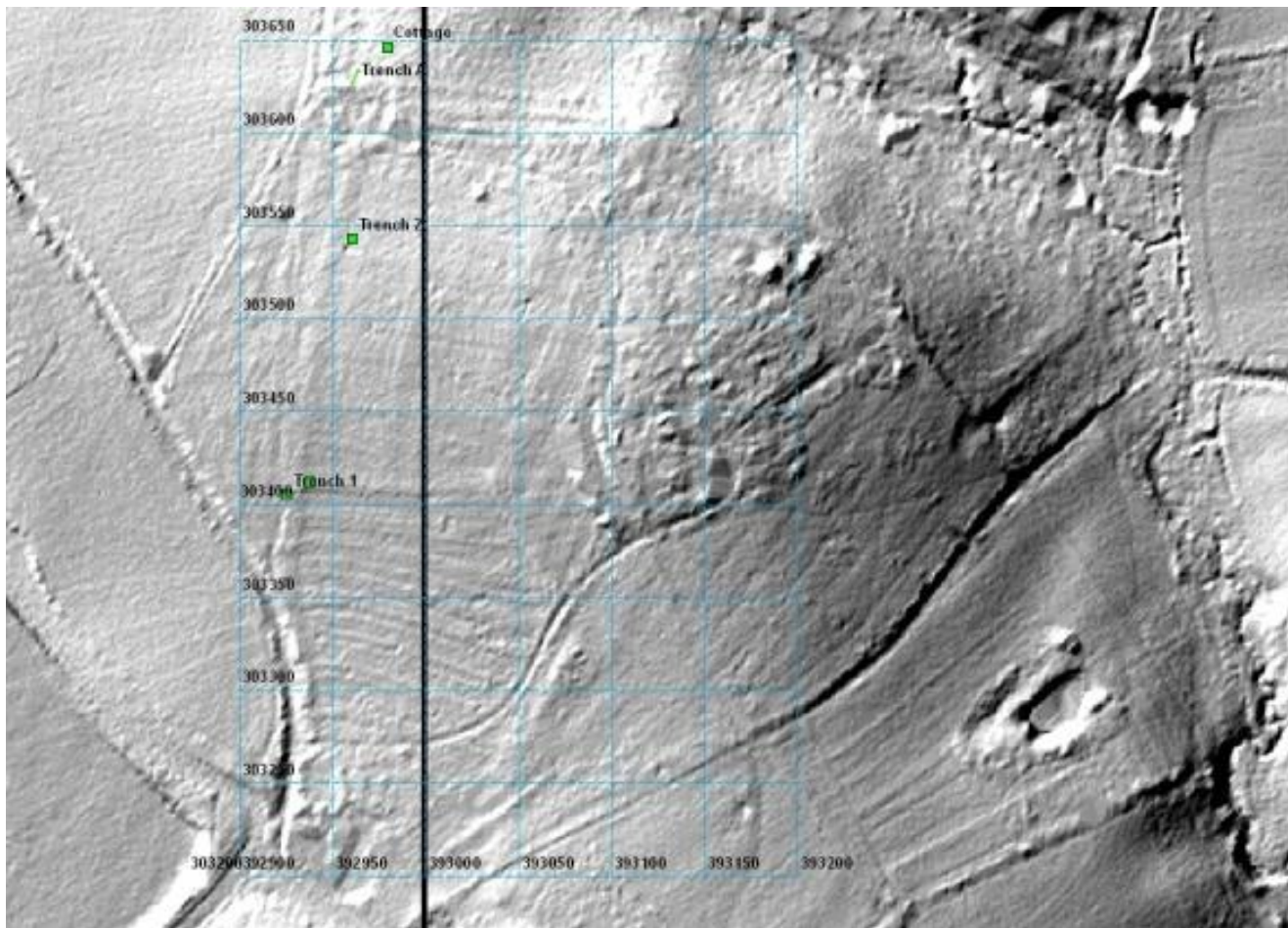


Figure 3 LiDAR Map and site plan

Figure 3 is a LiDAR map of the area. It shows evidence for the lost road. This is also a site plan so the positions of the cottage, trench A, trench 1 and trench 2 may be seen. A preliminary report for the cottage has already been written.

Cottage

GPS Reference 303646 N 392980 E

Trench A

The LiDAR map showed a track running north/south just to the west of the cottage so Trench A was dug to try to locate it. This trench was 15m long by 0.5m wide and was oriented NNE i.e. 22.5 degrees east.



Figure 4 Trench A facing NNE



Figure 5 Trench A facing SSW

Trench 1

This was dug across the LiDAR track at about 303400N and 30m long. Evidence was found for a track around 20m wide. At lower levels this decreased to less than 10m. A section of the north wall of the trench was drawn (currently not available) and a pseudo section along the trench was done to help confirm the findings of the excavation.

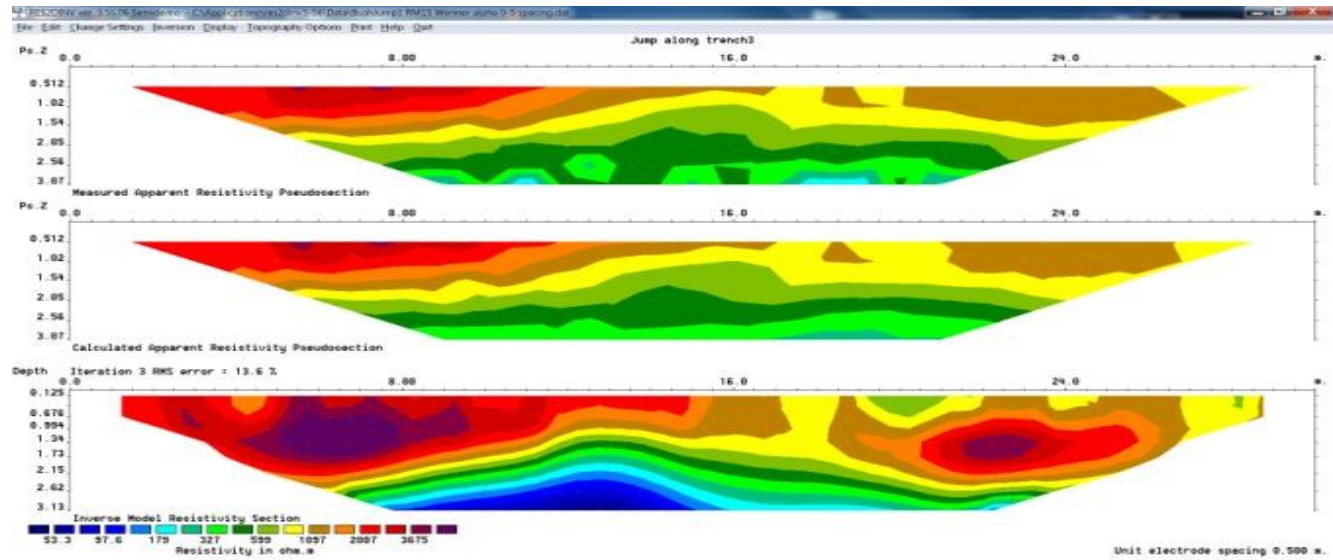


Figure 6 Pseudosection along Trench 1

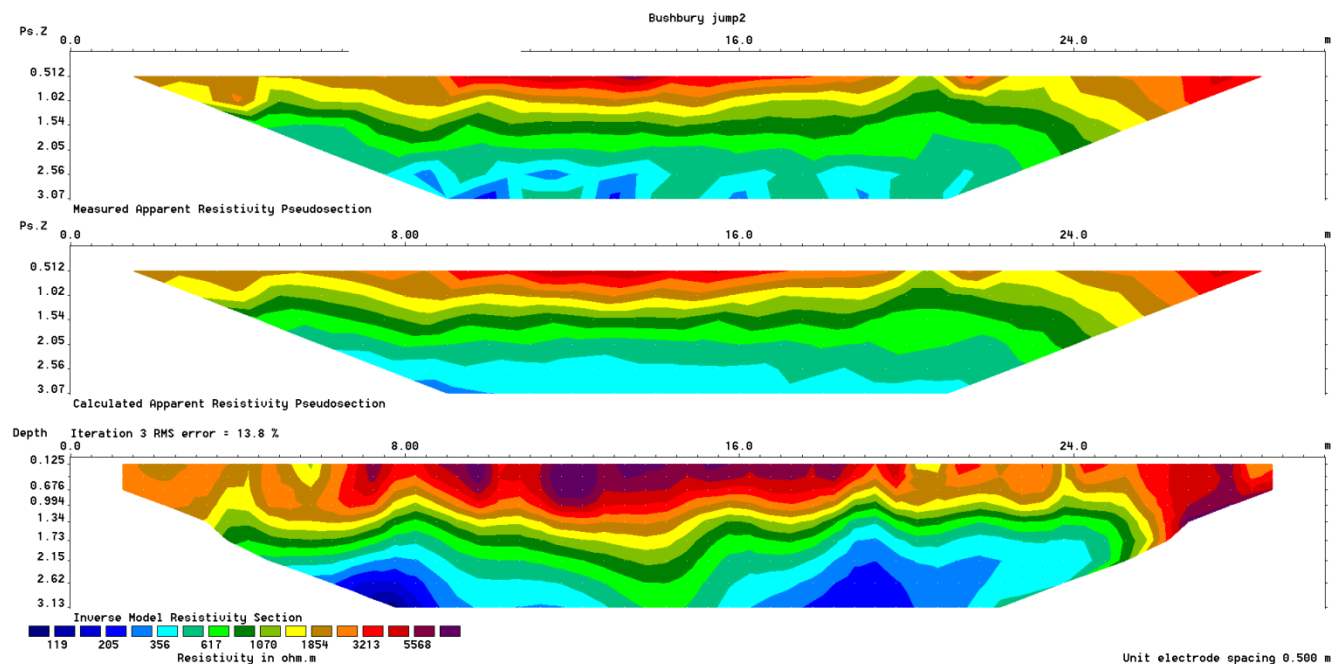


Figure 7 Pseudosection north of Figure 6

This was to confirm the line of the trackway.

Trench 2

GPS Reference, 303543N, 392961E

Site Diary 24/11/16

4 students Karin, Marc, Zoe and Steph were assigned to this site which was managed by Jan and Martin. The excavation was to investigate the space left by an uprooted tree and a trench 3m by 1.5m opened. The tree bole had small pebbles and clay as its base.



Figure 8. South end of Trench 2 showing the tree bole with burrow? entrance.

Large stones had been discovered on the west side of the trench opposite the tree bole but had been removed before recording. Further stones and large pebbles were still *in situ*.



Figure 9 Stone in situ on west side of trench.

This trench was excavated to 20cm. Pebbles across the trench were smaller at the east (tree) side at the north end. At the south end, a void was excavated on the west side but was most likely an animal run.



Figure 10 Animal run at south west corner.

Felicity excavated a pile of small stones at the east side of the south end which were probably deposited from the animal run. Apart from larger stones to the west and the animal run, there was nothing of note.

Site Diary 12/12/2016

Grace, Karin and Scott reshaped the trench into a recognisable 3m by 1m area. Grace and Adam have excavated before. Scott partially ran the excavation as Jan was keen for them to learn some techniques. He did a good job



Figure 11. View of Trench 2.

The section at the north end shows a stony area to the west which runs out to a more clay area to the east.



Figure 12. Section at north end.

Karin excavated a sondage at the north east corner, directed by Scott.



Figure 13. Sondage at north end of trench.

The north end of the trench was lower than the south end, by 50cm.

There were a few finds including a piece of pipe stem dating between 1680 and 1720 and several pieces of broken glass of colours clear, brown and green..

Further work: need to assess the direction of a line of large stones. Suggest a new trench 3m north and then west, check the water flow in this area and maps at Moseley Old Hall.

Results

Discussion

Conclusion

Acknowledgements

Copyright Notice

The contents of WAG Projects are copyright and may not be copied or stored in an information retrieval system without the prior permission of the WAG Chairman.

References

Appendix A